

# **GLOBAL ENGINEERING FOR GLOBAL FOOD PRODUCTION**

*AGF Freezers - Your Productivity Partner*







## ABOUT AGF FREEZERS

Established in 2010, AGF Freezers is a global food freezing manufacturer built on trust and dependability. Utilizing engineering and manufacturing expertise from Canada and Europe, AGF is committed to providing best-in-class freezing solutions to improve global food production efficiency. From independent, family-owned companies to traditional food production enterprises, customers have come to trust AGF as their productivity partner for their business growth. By choosing AGF, you invest in a partner for life. That is the AGF difference.

### OUR OFFICES

With our roots based in Vancouver, Canada, AGF Freezers has a long history in freezing and chilling solutions. From the ground up, AGF spent years learning best-in-class freezer engineering and technology, having amassed experience working alongside domestic and global freezer players. AGF Freezers expanded to international markets to meet customer demand, establishing offices in Europe, South America, China, Australasia and Middle East/Africa.

AGF customers come from around the world. Hailing from independent, family-sized businesses to traditional food production enterprises requiring high quality freezers at a competitive price point, AGF Freezers helps customers by focusing on premium solutions that are cost effective and efficient – all to ensure food businesses can produce safe, quality products to match their market needs.

### OUR PRODUCTS

AGF Freezers are based on customer need and requirement – competitive price point, space and operational restrictions and type of food processed, while still retaining high-quality engineering and construction.



## AGF FREEZER BENEFITS

GLOBAL ENGINEERING TECHNOLOGY AND PRACTICES THAT MEET FOOD SAFETY STANDARDS

1

CUSTOMIZABLE FREEZING AND CHILLING SOLUTIONS FOR SPACE OPTIMIZATION

2

SANITARY DESIGN PRINCIPLES FOR ENHANCED HYGIENE

3

OPTIMIZED CONSTRUCTION TO ENSURE HIGH PERFORMANCE

4



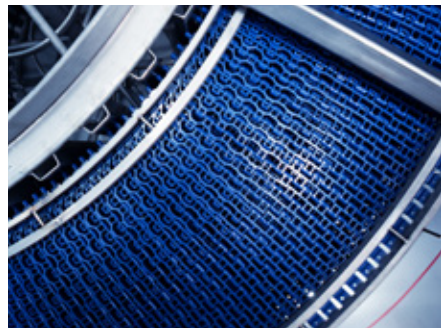


## SPIRAL FREEZERS

Modular construction for capacities upwards of 5000 kg per hour. Flexible configurations and airflows. Sequential defrost option for extended run times.

## IQF TUNNEL FREEZERS

Optimized IQF fluidisation and airflow control to eliminate product clumping. High efficiency fans and evaporators to reduce operating costs. Hygienic stainless steel construction.



### Belting

Modular plastic belting provides a hygienic and durable solution, resistant to moisture and corrosion. Used for freezing, cooling or proofing, plastic belting is designed for efficiency, longer belt life, smooth and reliable product transportation, and cleanability.



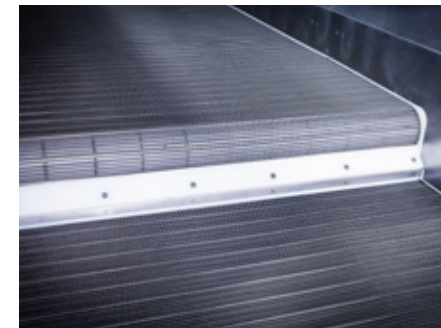
### Control Panel

PLC and HMI systems optimize performance, reliability, and user experience. PLCs provide automation and precise control of temperature and defrost cycles, while HMIs offer intuitive interfaces for monitoring, adjustments, and real-time information.



### Motor & Drive

Electrical drive technology offers efficient and precise control of motor speed and conveyor movement. By utilizing electric motors, power electronics, and control systems, it enables optimal freezing conditions, ensures smooth product flow, and enhances energy efficiency.



### Belting

Plastic and metal belting options come with distinct advantages including efficient and reliable product transportation. The belting design allows for optimal airflow, precise control over the freezing/chilling process while maintaining the integrity of the food product.



### Control Panel

PLC and HMI systems optimize performance, reliability, and user experience. PLCs provide automation and precise control of temperature and defrost cycles, while HMIs offer intuitive interfaces for monitoring, adjustments, and real-time information.



### Motor & Drive

Electrical drive technology provides precise control of motor speed, belt movement, and fan operation. By utilizing electric motors, power electronics, and control systems, it enables efficient freezing of individual food products, ensuring uniformity, high quality, and energy efficiency.

### CONSTRUCTION HIGHLIGHTS

- Capacities of 500 kg/hr to 5000 kg/hr
- Fully welded stainless steel floor construction with insulated panels
- Non-slip sloped sanitary floor design with integrated drains
- Robust stainless steel conveyor construction
- Modular construction and pre-assembly prior to shipment

- Plastic and metal conveyor belting options
- Horizontal airflow and vertical airflow, product specific

### • SPIRAL TECHNOLOGY

- SS304 stainless steel welded drum construction
- Direct or chain driven bottom gearbox drive system
- SEW Eurodrive helical bevel and planetary gearboxes
- Upgoing and downgoing arrangements
- Single and double drum conveyors

### CONSTRUCTION HIGHLIGHTS

- Fully welded stainless steel floor construction with insulated panels
- Non-slip sloped sanitary floor design with integrated drains
- Robust stainless steel conveyor construction
- Customized product fluidization to eliminate product clumping and sticking

### FLUIDIZATION TECHNOLOGY

- Chain driven eccentric UHMW blocks for mechanically separating products
- Two conveyor, cascade arrangement for crust and finish freezing
- Centrifugal fan impellers to generate uniform pressure zone to fluidize product

**CONTACT US FOR A CUSTOMIZED QUOTE THAT MEETS YOUR NEEDS**

[SALES@AGFFREEZERS.COM](mailto:SALES@AGFFREEZERS.COM)



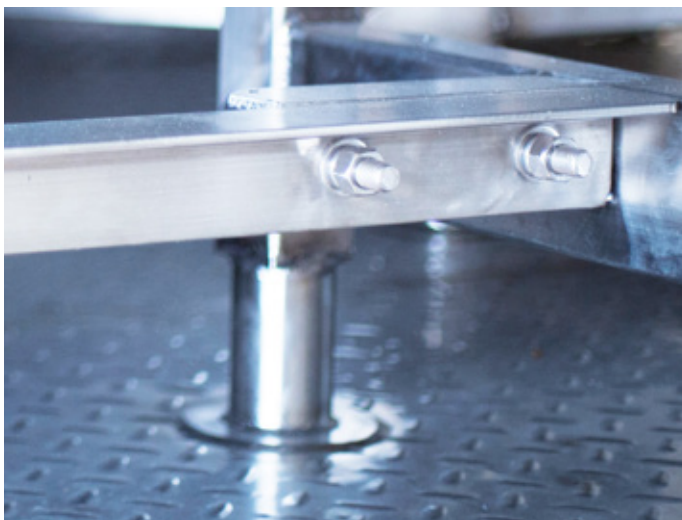
# AGF FREEZER FEATURES



**Extreme Temperature Motors**



**Anti-Slip Floors**



**Raised Internal Supports**



**Robust Welded Construction**

## AGF FREEZERS - MODELS

### IQF FREEZER

	Min	»»»»»	»»»»»	»»»»»	
Model	AFTC-A22	AFNC-BBP15B-2.0T	AFNC-BCP15B-3.0T	AFNC-BCP20C-4.0T	
Capacity	1,000	2,000	3,000	4,000	kg/hr
Belt Width	980	1,280	1,280	1,580	mm
Refrigeration Requirement	170	320	450	580	kw
Power Supply	40	60	80	100	kw

	»»»»»	»»»»»	»»»»»	Max	
Model	AFNC-BCP25D-5.0T	AFNC-BDP25D-6.0T	AFNC-CEP25E-8.0T	AFNC-CEP30F-10.0T	
Capacity	5,000	6,000	8,000	10,000	kg/hr
Belt Width	1,880	1,880	2,180	2,480	mm
Refrigeration Requirement	660	780	1,055	1,280	kw
Power Supply	120	140	180	220	kw

### SPIRAL FREEZER

	Min	»»»»»	»»»»»	
Model	AFS13B2C125-0.5T	AFSS19B6C125-1.0T	AFSS28B6C125-1.5T	
Capacity	500	1,000	1,500	kg/hr
Belt Width	560	660	660	mm
Refrigeration Requirement	105	105	275	kw
Power Supply	25	40	55	kw

	»»»»»	»»»»»	Max	
Model	AFSS28C0C130-2.0T	AFSS28C0A130-2.5T	AFSS34C0A130-3.0T	
Capacity	2,000	2,500	3,000	kg/hr
Belt Width	760	760	760	mm
Refrigeration Requirement	350	350	500	kw
Power Supply	75	85	105	kw





**CANADIAN ROOTS**

Canadian Engineering  
Expertise



**SERVICE & RETROFIT**

Improved Performance with  
Less Downtime + Lower Cost  
than Replacement



**EFFICIENCY**

Maximizing  
Cost + Efficiency



**RELIABILITY**

We Stand Behind  
Our Products



**PARTNERSHIPS**

We Listen  
to Your Needs



[www.agffreezers.com](http://www.agffreezers.com)



[www.linkedin.com/mwlite/  
company/agffreezers](http://www.linkedin.com/mwlite/company/agffreezers)